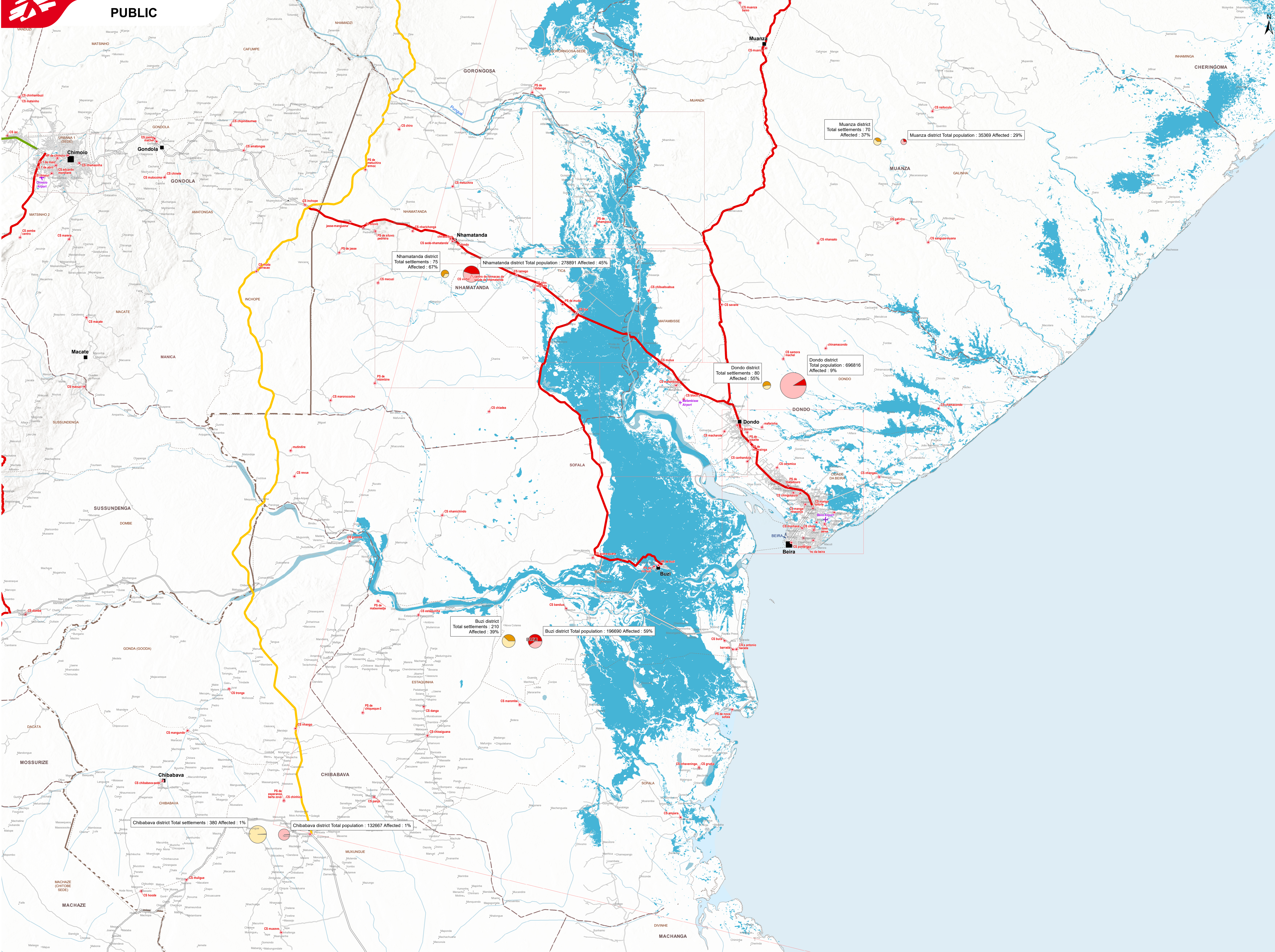


MOZAMBIQUE - Idai cyclone - Reference map with boundaries, health facilities, cities, transport, and affected population



LEGEND

Affected population and settlement*

- Population affected (Red circle)
- Population non affected (Yellow circle)
- Settlement affected (Red square)
- Settlement non affected (Yellow square)

Health Facility

- Health Facility (Red star)

Population places

- Capital admin 1 (Black square)
- Capital admin 2 (Black circle)
- Capital admin 3 (Black dot)
- City, town (Black square)
- Village (Black dot)

Access constraints**

- Open (Green line)
- Closed (Red line)
- Restricted (Yellow line)

Roads

- Major (Thick grey line)
- Medium (Thin grey line)
- Small (Dotted grey line)
- Other (Thin grey line)

Airports and harbours

- Airport (Blue plane icon)
- Harbour (Blue anchor icon)

Observed flood extent

- Copernicus data collection extent (21/03/2019) (Light blue area)
- Copernicus data collection extent (20/03/2019) (Dark blue area)

Boundaries

- Coast line (Dashed line)
- International Boundary (Thick dashed line)
- Governorate (Level 1) (Thin solid line)
- District (Level 2) (Dotted line)
- Sub-district (Level 3) (Thin solid line)
- Observed flood extent*** (Blue area)

Hydrography

- River (Blue line)
- Lake (Blue area)

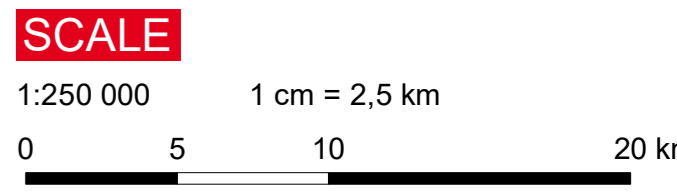
*This is a preliminary analysis & has not yet been validated in the field.
 **Population and settlement affected within the analysis extent.
 *** Copernicus flood extent as of 20/03/2019
 **** Copernicus flood extent as of 19/03/2019
 ***** UNOSAT flood extent as of 20/03/2019
 ***** Sentinel flood extent as of 20/03/2019
 ***** Atmospheric and Environmental Research flood extent as of 03/2019

SOURCES

Admin : GADM
 Access constraints : WFP
 Affected population : UNOSAT
 Places : geonames, OSM
 Roads : OSM
 Hydro : DCW
 Health sites : MSF
 Flood extent : UNOSAT, Copernicus, Sentinel, Atmospheric and Environmental Research

PROPERTIES

Document name : MOZ_Populationaffected_AOL_190322
 Access constraints : WFP
 Affected population : UNOSAT
 Created by : MSF GIS Unit - gisunit.gva@geneva.msf.org
 Print format : A4 Landscape
 Confidentiality : Public



Find more maps on mapcentre.msf.org

This map is for information purposes only and has no political significance. The boundaries and names shown and the designations used on this map do not imply official endorsement or acceptance by MSF.