

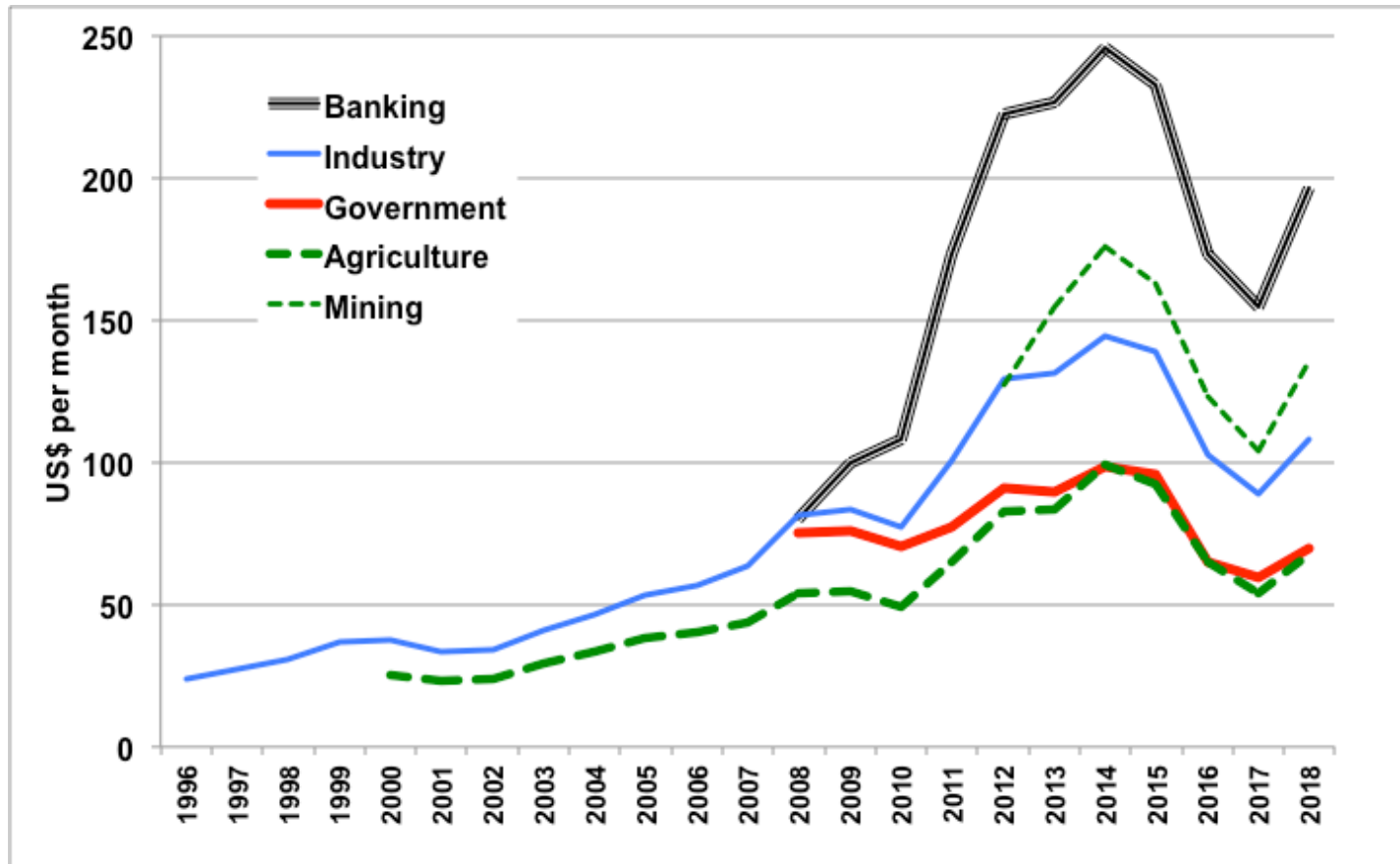
MOZAMBIQUE News reports & clippings

409 30 April 2018 Minimum wage & exchange rate supplement

Editor: Joseph Hanlon (j.hanlon@open.ac.uk)

Previous newsletters, more detailed press reports in English and Portuguese, and other Mozambique material are posted on tinyurl.com/mozamb
This newsletter can be cited as "Mozambique News Reports & Clippings"

Mozambique minimum wage in US\$ per month



Minimum wages are set annually and run from 1 April. There are now 16 different minimum wages, ranging from \$66 per month for kapenta fishing and \$70 in the civil service, to \$108 in industry, \$135 in mining, and then a separate and much higher \$196 in the financial sector.

From a single minimum wage, a separate agricultural minimum was introduced in 2000. In 2008 there was a shift to 11 different minimum wages. Categories change slightly each year, and there are now 16.

Minimum wages have been rising steadily in Meticals. In US\$ in 1996, there was a single \$24 per month. By 2014 the lowest minimum had risen to \$93. But the devaluation of the Metical has led to a sharp fall in US\$ terms until 2017. The Metical rose in value slightly in 2018 leading to a rise in minimum wages in US\$ terms.

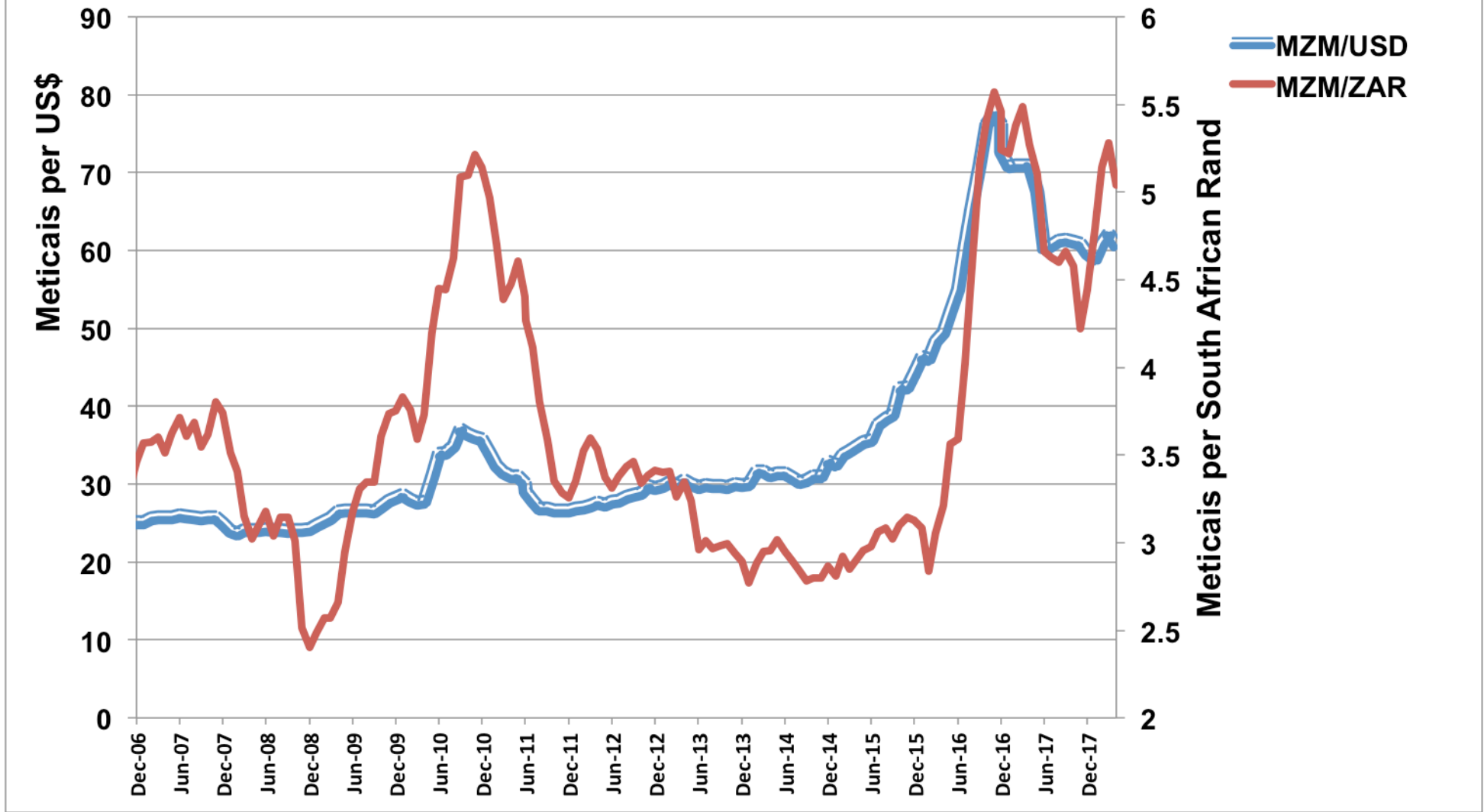
Sector	Minimum wage, Meticaís						Mt %age change			Minimum wage, US \$						\$ %age change			%age since peak
	13-Mt	14-Mt	15-Mt	16-Mt	17-Mt	18-Mt	15-16	16-17	17-18	13-\$	14-\$	15-\$	16-\$	17-\$	18-\$	15-16	16-17	17-18	14-18
1: Agriculture, livestock, forestry	2,500	3,010	3,183	3,298	3,642	4,142	4%	10%	14%	83	99	92	65	54	68	-29%	-17%	25%	-31%
2: Fisheries	2,850	3,167	3,500	3,815	4,615	5,115	9%	21%	11%	95	104	101	75	69	84	-25%	-9%	22%	-20%
2a: Kapenta	2,645	2,857	3,000	3,375	3,780	4,063	13%	12%	7%	88	94	87	67	56	66	-23%	-16%	18%	-29%
3: Mining	4,651	5,350	5,643	6,214	6,963	8,262	10%	12%	19%	155	176	163	123	104	135	-25%	-16%	30%	-23%
3a: Quarry, sand	3,888	4,316	4,539	4,907	5,200	5,798	8%	6%	12%	129	142	131	97	77	95	-26%	-20%	23%	-33%
3b: Salt		4,010	4,176	4,476	4,734	5,018	7%	6%	6%		132	121	89	70	82	-27%	-20%	16%	-38%
4: Manufacturing	3,943	4,400	4,815	5,200	5,965	6,620	8%	15%	11%	131	145	139	103	89	108	-26%	-14%	22%	-25%
4a Baking	3,195	3,485	3,790	3,985	4,335	4,669	5%	9%	8%	106	115	110	79	65	76	-28%	-18%	18%	-33%
5: Electricity, gas, water	4,107	4,768	5,402	6,037	7,286	7,796	12%	21%	7%	137	157	156	119	109	128	-24%	-9%	18%	-19%
5a smaller companies <100 workers		4,480	4,852	5,422	6,002	6,422	12%	11%	7%		147	140	107	89	105	-24%	-17%	18%	-29%
6: Construction:	3,495	3,953	4,483	4,887	5,436	5,786	9%	11%	6%	116	130	130	97	81	95	-25%	-16%	17%	-27%
7: Non-financial services	3,826	4,228	4,676	5,050	5,525	6,250	8%	9%	13%	127	139	135	100	82	102	-26%	-18%	24%	-26%
7a Hotels				5,050	5,328	5,878		6%	10%				100	79	96		-21%	21%	
8: Financial services	6,817	7,465	8,050	8,750	10,400	11,988	9%	19%	15%	227	245	233	173	155	196	-26%	-11%	27%	-20%
8a: Micro-finance		7,421	7,800	8,400	9,240	10,571	8%	10%	14%		244	225	166	138	173	-26%	-17%	26%	-29%
9: Public administration, security	2,699	3,002	3,152	3,278	3,996	4,255	4%	22%	6%	90	99	91	65	60	70	-29%	-8%	17%	-29%

exchange rate at 1 Apr (BdM mid rate)

30.08 30.43 34.60 50.55 67.15 61.12

There is a table of government salaries on <http://www.meusalario.org/mocambique/>

Mozambique historic exchange rates



US\$ and South African Rand exchange rates from 2006

www.oanda.com/currency/historical-rates/
Average monthly Mid rates @ +/- 0% to Dec 16,
then BdM monthly

Month av	USD/MZN	ZAR/MZN
Apr-18	60.66	5.04
Mar-18	62.21	5.28
Feb-18	60.93	5.14
Jan-18	58.92	4.79
Dec-17	59.6	4.44
Nov-17	60.9	4.22
Oct-17	61.2	4.58
Sep-17	61.4	4.66
Aug-17	61.3	4.6
Jul-17	60.7	4.63
Jun-17	60.1	4.66
May-17	67.6	5.1
Apr-17	66.5	4.8
Mar-17	70.42	5.4
Feb-17	70.42	5.34
Jan-17	70.75	5.22
Dec-16	72.7	5.24
Nov 16	76.2463	5.45697
Oct 16	77.6158	5.56986
Sep 16	76.155	5.40833
Aug 16	70.9458	5.15622
Jul 16	65.651	4.55926
Jun 16	60.6037	4.01608
May 16	54.9442	3.59066
Apr 16	52.0677	3.56468

Mar 16	49.4352	3.21354
Feb 16	48.2878	3.05678
Jan 16	46.1058	2.83686
Dec 15	46.3355	3.0834
Nov 15	44.2228	3.12605
Oct 15	42.4435	3.14616
Sep 15	42.3137	3.10116
Aug 15	38.9629	3.02242
Jul 15	38.3919	3.08482
Jun 15	37.652	3.05982
May 15	35.6416	2.97895
Apr 15	35.4393	2.95558
Mar-15	34.3474	2.8493
Mar-15	34.3474	2.8493
Feb-15	33.8329	2.919
Jan-15	32.4855	2.8101
Dec-14	32.9065	2.8644
Nov-14	31.0087	2.7977
Oct-14	31.0645	2.8009
Sep-14	30.4957	2.7834
Aug-14	30.2887	2.8404
Jul-14	30.9226	2.9015
Jun-14	31.444	2.9495
May-14	31.4119	3.019
Apr-14	31.194	2.957
Mar-14	31.683	2.947
Feb-14	31.669	2.882
Jan-14	29.982	2.77
Dec-13	29.9506	2.8927

Nov-13	29.9717	2.9408
Oct-13	29.6715	2.9956
Sep-13	29.7873	2.9804
Aug-13	29.8111	2.9677
Jul-13	29.8869	3.0112
Jun-13	29.6703	2.9601
May-13	30.0697	3.2414
Apr-13	30.475	3.3443
Mar-13	29.9152	3.261
Feb-13	30.2291	3.4044
Jan-13	29.8074	3.4027
Dec-12	29.5056	3.414
Nov-12	29.776	3.3847
Oct-12	28.8771	3.3384
Sep-12	28.665	3.4628
Aug-12	28.3497	3.4354
Jul-12	27.826	3.3776
Jun-12	27.8067	3.3097
May-12	27.391	3.3727
Apr-12	27.6812	3.5366
Mar-12	27.3065	3.5968
Feb-12	26.9897	3.5218
Jan-12	26.8856	3.3511
Dec-11	26.6585	3.2558
Nov-11	26.6775	3.2834
Oct-11	26.679	3.3528
Sep-11	26.87	3.592
Aug-11	26.8823	3.8027
Jul-11	27.9177	4.1172

Jun-11	29	4.2684
May-11	30.1471	4.4075
Apr-11	30.9767	4.6076
Mar-11	30.9774	4.4777
Feb-11	31.5554	4.3874
Jan-11	32.4242	4.7047
Dec-10	34.0113	4.9684
Nov-10	35.805	5.1394
Oct-10	36.0355	5.2133
Sep-10	36.3983	5.0947
Aug-10	37.0726	5.0845
Jul-10	34.9242	4.6222
Jun-10	33.9917	4.4448
May-10	33.9203	4.449
Apr-10	30.8437	4.2005
Mar-10	27.7021	3.7326
Feb-10	27.5771	3.5914
Jan-10	28.01	3.7585
Dec-09	28.6952	3.8288
Nov-09	28.2678	3.751
Oct-09	27.8813	3.7331
Sep-09	27.0998	3.6063
Aug-09	26.4903	3.3439
Jul-09	26.6281	3.3463
Jun-09	26.6007	3.307
May-09	26.6052	3.1769
Apr-09	26.6185	2.9499
Mar-09	26.4739	2.659
Feb-09	25.6643	2.5711
Jan-09	25.2866	2.568
Dec-08	24.7677	2.4836
Nov-08	24.2843	2.4012

Oct-08	24.13	2.5132
Sep-08	24.1103	3.0107
Aug-08	24.0065	3.1445
Jul-08	24.0611	3.1436
Jun-08	24.0835	3.0402
May-08	24.19	3.1758
Apr-08	24.1697	3.1006
Mar-08	24.1468	3.0227
Feb-08	24.0578	3.1519
Jan-08	23.6773	3.4041
Dec-07	24.0315	3.5105
Nov-07	25.011	3.7403
Oct-07	25.7534	3.8046
Sep-07	25.7347	3.6178
Aug-07	25.5952	3.5473
Jul-07	25.7113	3.6862
Jun-07	25.82	3.6068
May-07	26.02	3.7131
Apr-07	25.7893	3.6234
Mar-07	25.7994	3.5109
Feb-07	25.7943	3.6003
Jan-07	25.6697	3.5732
Dec-06	25.1753	3.5682
Nov-06	25.1525	3.4609
Oct-06	25.1335	3.2903
Sep-06	25.1367	3.3951
Aug-06	25.7932	3.7179

Historic minimum wage

	Mt	\$	M	\$	Mt/\$
1996	271	23.7			11.4
1997	312	27.3			11.4
1998	354	30.5			11.6
1999	450	36.8			12.2

Metical in earlier years corrected to new Metical (by dividing by 1000)

	Mt	\$	M	\$	Mt/\$
	<i>Non-agricultural</i>		<i>Agricultural</i>		
2000	569	37.6	383	25.3	15.1
2001	666	33.6	459	23.2	19.8
2002	812	34.2	560	23.6	23.7
2003	983	41.1	700	29.3	23.9
2004	1,120	46.7	805	33.6	24.0
2005	1,277	53.0	918	38.1	24.1
2006	1,443	56.5	1,024	40.2	25.5
2007	1,645	63.6	1,126	43.6	25.9
	<i>Industrial</i>		<i>Agricultural</i>		
2008	1,975	81.51	1,315	54.27	24.23
2009	2,300	83.51	1,486	53.96	27.54
2010	2,497	77.33	1,692	52.40	32.29